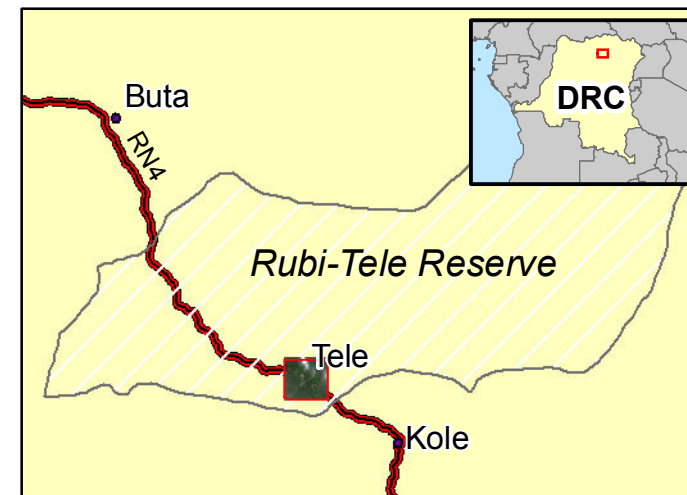


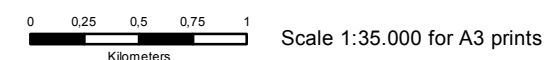
Critical Assets Map

Road monitoring Tele

Location



Local projection: UTM Zone 32 , Datum: WGS 84
 Geographic projection: Lat/Lon (DMS), Datum: WGS 84



Data sources

Satellite data
 date: 27/04/2010
 copyright: Geo-Eye
 resolution: 4 m

Other data
 Landsat mosaic 2005 - 2010 - © OSFAC
 Map analysis - © EUROSENSE

Description

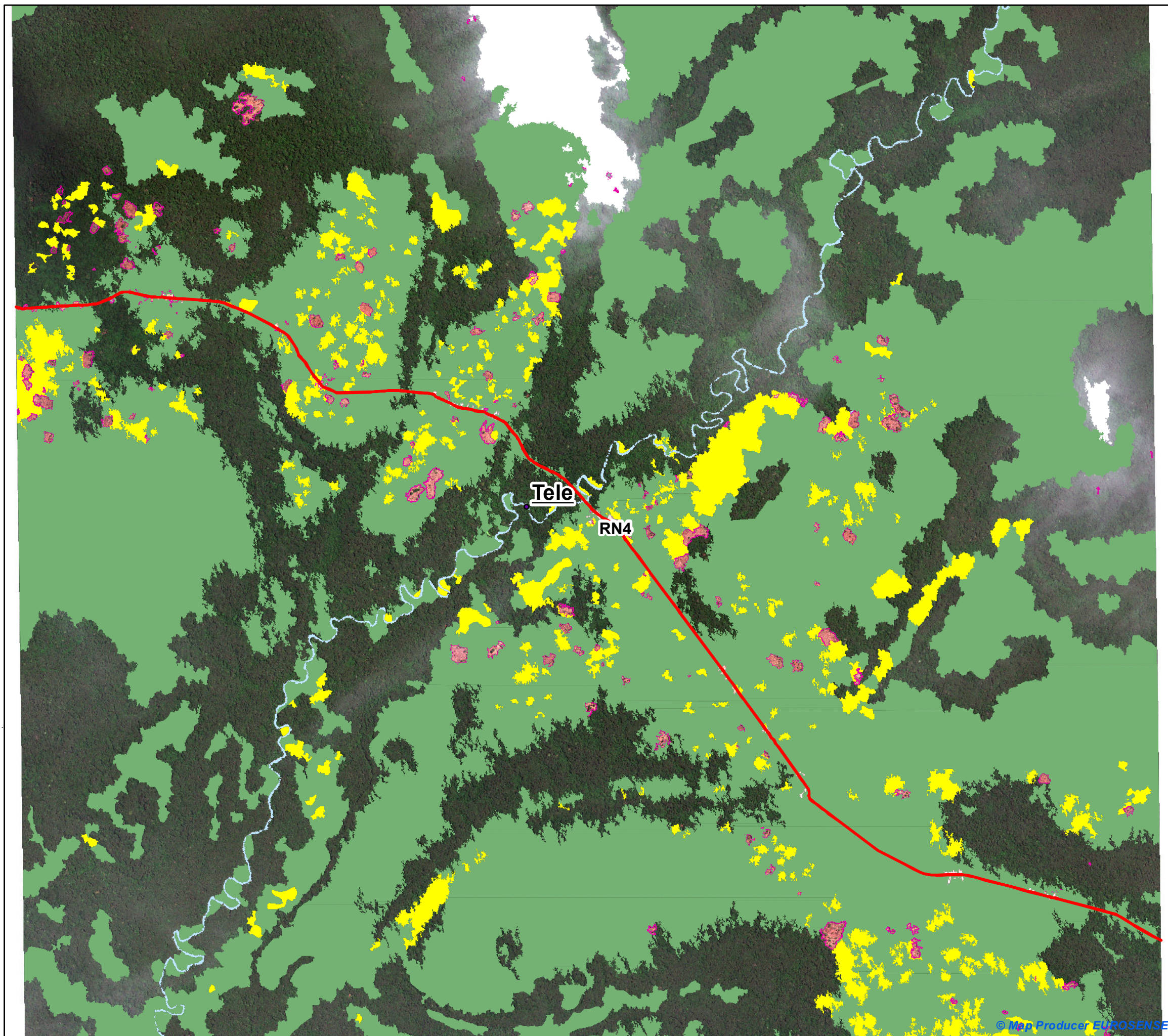
This map was produced by the G-MOSAIC Critical Assets monitoring Service (CTA). The CTA service is monitoring the rehabilitation of the road 'RN4' in DRC, from Kisangani up to Bondo and Bunduki. The Rubi-Tele reserve is one of the hotspots along the RN4 for which VHR Geo-Eye imagery was acquired. A semi-automatic classification is executed on the VHR scene in eCognition v8.0. 7 classes are distinguished. 'Primary forest' class is a mature, dense tropical humid forest with a canopy cover of more than 95%. 'Secondary forest' is more heterogeneous and less dense humid tropical forest with a canopy cover of more than 80%. The class 'Grassland' is integrating recently cleared area or agricultural area, the canopy cover is below 20%. The class 'Bare soil' identifies the areas where no new vegetation has emerged yet. In many cases, the fallen trees are still on the terrain. 'Built-up area' contains houses and related terrain. Other classes are 'road' and 'river'. The overall accuracy of the classification is 92%. The vector product is delivered to the end-user (OSFAC).

Legend

Roads	Protected area
RN4 (under rehabilitation)	Rubi-Tele Reserve
Classification	
Water	Bare soil
Primary forest	Built-up area
Secondary forest	Road
Grassland	Cloud

Disclaimer

This map has been generated by optimizing the material available. Boundary or naming information implies no endorsement from the producer. Geographic information has limitations due to the scale, resolution, date and interpretation of the original source materials. The producer accepts no legal responsibility or liability whatsoever with regard to the use of this product. Product is covered by the EU Security Regulation 2001/264/EC.



© Map Producer EUROSENSE